



Stantec Consulting Ltd.  
300W-675 Cochrane Drive Markham, ON L3R 0B8



March 18, 2019

Dear Sir or Madam,

**Reference: The Municipalities of Manitouwadge, Marathon, Schreiber, Terrace Bay and Wawa – The North Shore LNG Project, Notice of Project Commencement and Information Sessions**

The Municipalities of Manitouwadge, Marathon, Schreiber, Terrace Bay and Wawa (the Municipalities) are proposing to construct gas storage facilities (above ground storage tanks and associated vaporization systems) as well as local gas distribution systems (gas mains and service pipes) in each of the five municipalities of the North Shore. The North Shore LNG Project ("the Project") will include the construction of distribution networks (made up of small mains/laterals ranging in Nominal Pipe Size (NPS) 2" to 6" in size, depending on specified loads. The distribution networks will be primarily designed to be located within existing municipal infrastructure (road easements, etc.). The general location and study areas of the proposed storage facilities and distribution networks are shown on the attached maps.

As part of the planning process, the Municipalities have retained Stantec Consulting Ltd. ("Stantec") to undertake an Environmental Study of the construction and operation of the proposed natural gas pipeline. The Environmental Study will fulfill the requirements of the Ontario Energy Board's (OEB's) *Environmental Guidelines for the Location, Construction, and Operation of Hydrocarbon Pipelines and Facilities in Ontario, 7th Edition (2016)*".

It is anticipated that the Environmental Reports for the studies will be completed by June 2019, after which the Municipalities will file applications for the proposed pipelines to the OEB. The OEB's review and approval is required before construction of the Project can proceed. If approved, construction of the pipelines and storage facilities is anticipated to begin in Spring 2020.

Stantec is presently compiling an environmental, socio-economic and archaeological/cultural heritage inventory of the Environmental Study Area. As an agency with jurisdiction or a potential interest in developments in the Project areas, you are invited to provide or coordinate comments regarding the proposed pipelines and storage facilities. Specifically, Stantec is seeking information regarding planning principles or guidelines implemented by your agency that may affect routing, construction, and/or operation of the proposed pipelines and storage facilities. Stantec is also seeking background environmental, socio-economic, and archaeological/cultural heritage information that may be useful in compiling the inventory of the Environmental Study Areas.

Finally, we request that you provide us with information regarding other proposed developments within the Environmental Study Areas for incorporation into the Environmental Study and related reports as a component of the cumulative effects assessment. **Please contact us to discuss the most efficient way to obtain this information.**

Public consultation with landowners, Indigenous communities, government agencies and other interested persons is an integral component of the process. Details for the Information Sessions for the proposed Project are provided below:



March 18, 2019

Page 2 of 2

**Reference: The Municipalities of Manitouwadge, Marathon, Schreiber, Terrace Bay and Wawa – The North Shore LNG Project, Notice of Project Commencement and Information Sessions**

**Tuesday, April 9, 2019  
12:00 p.m. to 3:00 p.m.  
Michipicoten Memorial  
Community Centre  
3 Chris Simon Drive  
Wawa, ON**

**Wednesday, April 10, 2019  
12:00 p.m. to 3:00 p.m.  
Manitouwadge Community  
Centre  
23 Manitou Road  
Manitouwadge, ON**

**Thursday, April 11, 2019  
12:00 p.m. to 3:00 p.m.  
Schreiber Community Hall  
100 Langworthy Street  
Schreiber, ON**

**Wednesday, April 10, 2019  
5:00 p.m. to 8:00 p.m.  
Marathon Centre Mall  
2 Hemlo Drive  
Marathon, ON**

**Thursday, April 11, 2019  
5:00 p.m. to 8:00 p.m.  
Michael King Hall  
13 Selkirk Avenue  
Terrace Bay, ON**

The Information Sessions will be conducted as a drop-in style, and representatives will be available to discuss the proposed Project including the proposed routes, design and the anticipated Project schedule. Input received will be used to inform the planning around the preferred pipeline routes, and to develop site specific environmental protection or mitigation measures for the Project.

If you have questions or concerns regarding the Project, please do not hesitate to contact the undersigned.

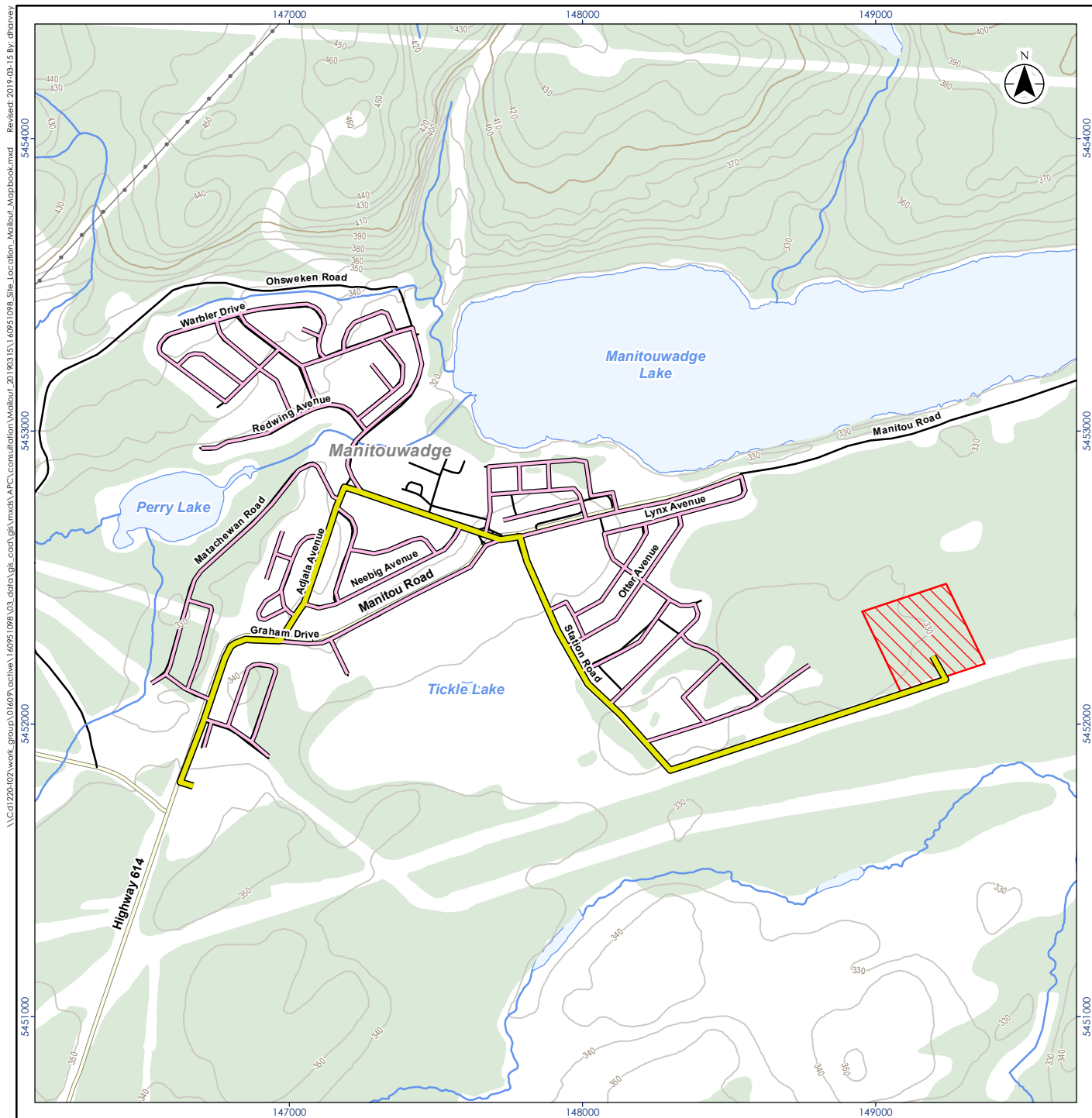
Regards,

**STANTEC CONSULTING LTD.**

**Rooy Georgopoulos, B.Sc.**  
Senior Project Manager  
Phone: (905) 415-6367  
Fax: (905) 474-9889  
rooy.georgopoulos@stantec.com

Attachment: Map book of Project Locations

c. Daryl Skworchinski, Chief Administrative Officer, Town of Marathon



**Notes**  
 1. Coordinate System: NAD 1983 UTM Zone 17N  
 2. Base features produced under license with the Ontario Ministry of Natural Resources and Forestry © Queen's Printer for Ontario, 2018.

### Legend

- Lateral Pipeline
- Main Pipeline
- Proposed Storage Area Development Area
- Major Road
- Local Road
- Hydro Line
- Watercourse
- Waterbody

0 250 500 metres  
 1:20,000 (at original document size of 8.5x11)



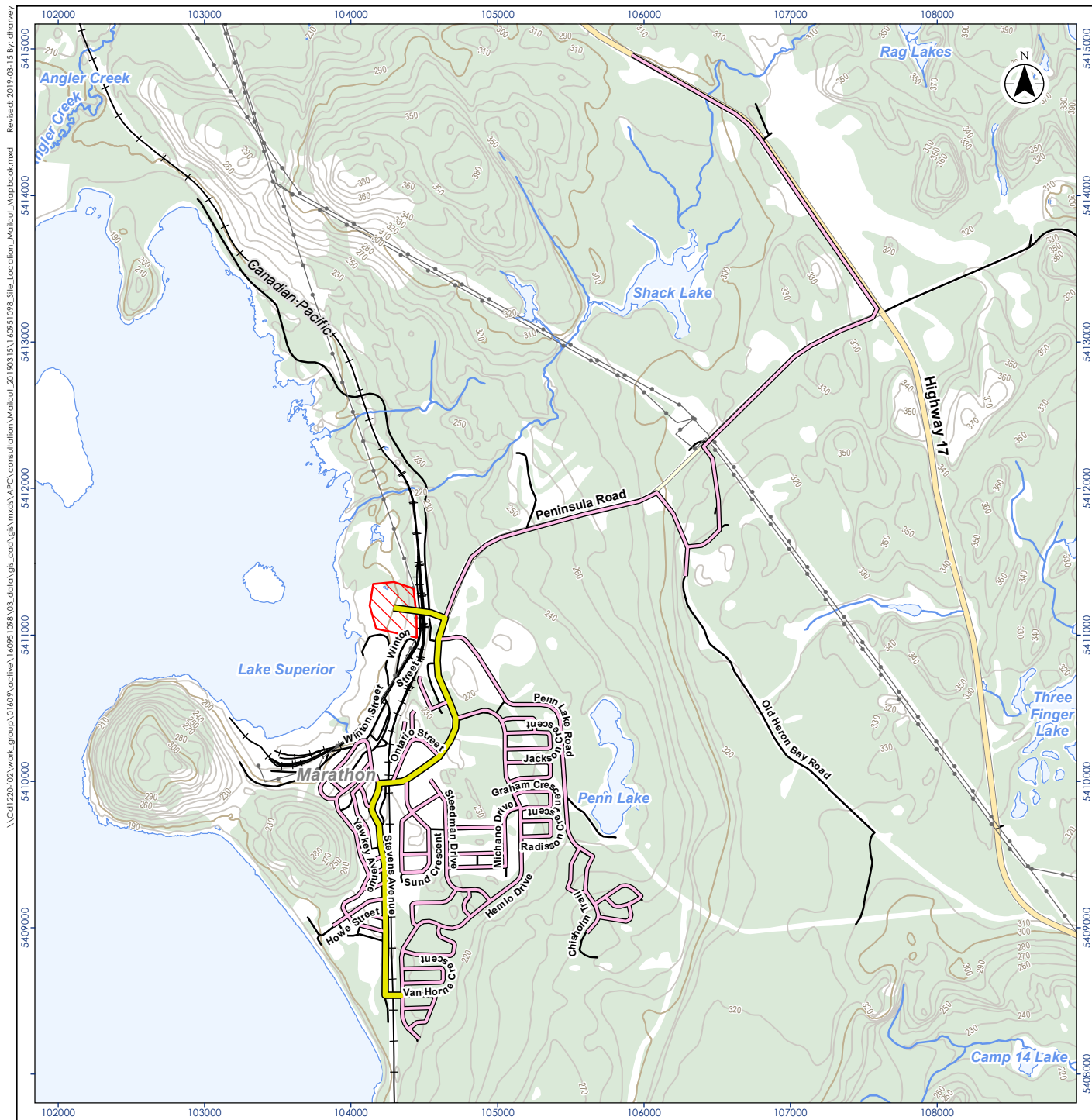
Project Location: Manitowadge, ON  
 160951098  
 Prepared by DH on 2019-03-15  
 Technical Review by RG on 2019-03-15

Client/Project: NORTHEAST MIDSTREAM NORTH SHORE LNG

Figure No. 1

**Project Location- Manitowadge**

Disclaimer: Stantec assumes no responsibility for data supplied in electronic format. The recipient accepts full responsibility for verifying the accuracy and completeness of the data. The recipient releases Stantec, its officers, employees, consultants and agents, from any and all claims arising in any way from the content or provision of the data.



**Notes**  
 1. Coordinate System: NAD 1983 UTM Zone 17N  
 2. Base features produced under license with the Ontario Ministry of Natural Resources and Forestry © Queen's Printer for Ontario, 2018.

### Legend

- |  |             |
|--|-------------|
| Lateral Pipeline                       | Hydro Line  |
| Main Pipeline                          | Railway     |
| Proposed Storage Area Development Area | Watercourse |
| Highway                                | Waterbody   |
| Major Road                             |             |
| Local Road                             |             |

0 250 500 metres  
 1:40,000 (at original document size of 8.5x11)



Project Location  
 Marathon, ON

160951098  
 Prepared by DH on 2019-03-15  
 Technical Review by RG on 2019-03-15

Client/Project  
 NORTHEAST MIDSTREAM  
 NORTH SHORE LNG

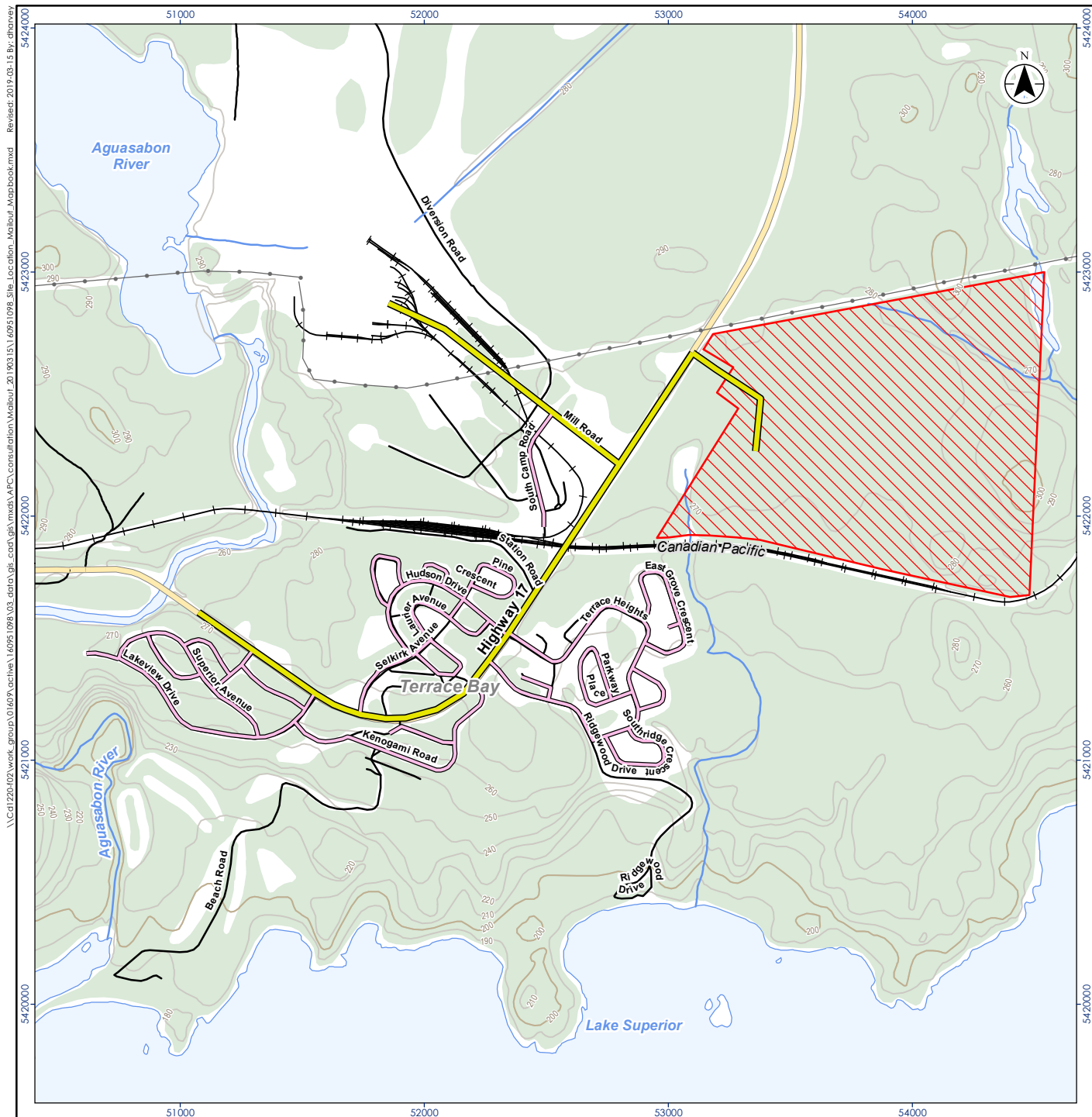
Figure No.  
**2**

Title  
**Project Location- Marathon**

Disclaimer: Stantec assumes no responsibility for data supplied in electronic format. The recipient accepts full responsibility for verifying the accuracy and completeness of the data. The recipient releases Stantec, its officers, employees, consultants and agents, from any and all claims arising in any way from the content or provision of the data.







**Notes**  
 1. Coordinate System: NAD 1983 UTM Zone 17N  
 2. Base features produced under license with the Ontario Ministry of Natural Resources and Forestry © Queen's Printer for Ontario, 2018.

### Legend

- Lateral Pipeline
- Main Pipeline
- Proposed Storage Area Development Area
- Highway
- Local Road
- Hydro Line
- Railway
- Watercourse
- Waterbody

0 250 500 metres  
 1:24,000 (at original document size of 8.5x11)



Project Location: Terrace Bay, ON  
 Prepared by DH on 2019-03-15  
 Technical Review by RG on 2019-03-15

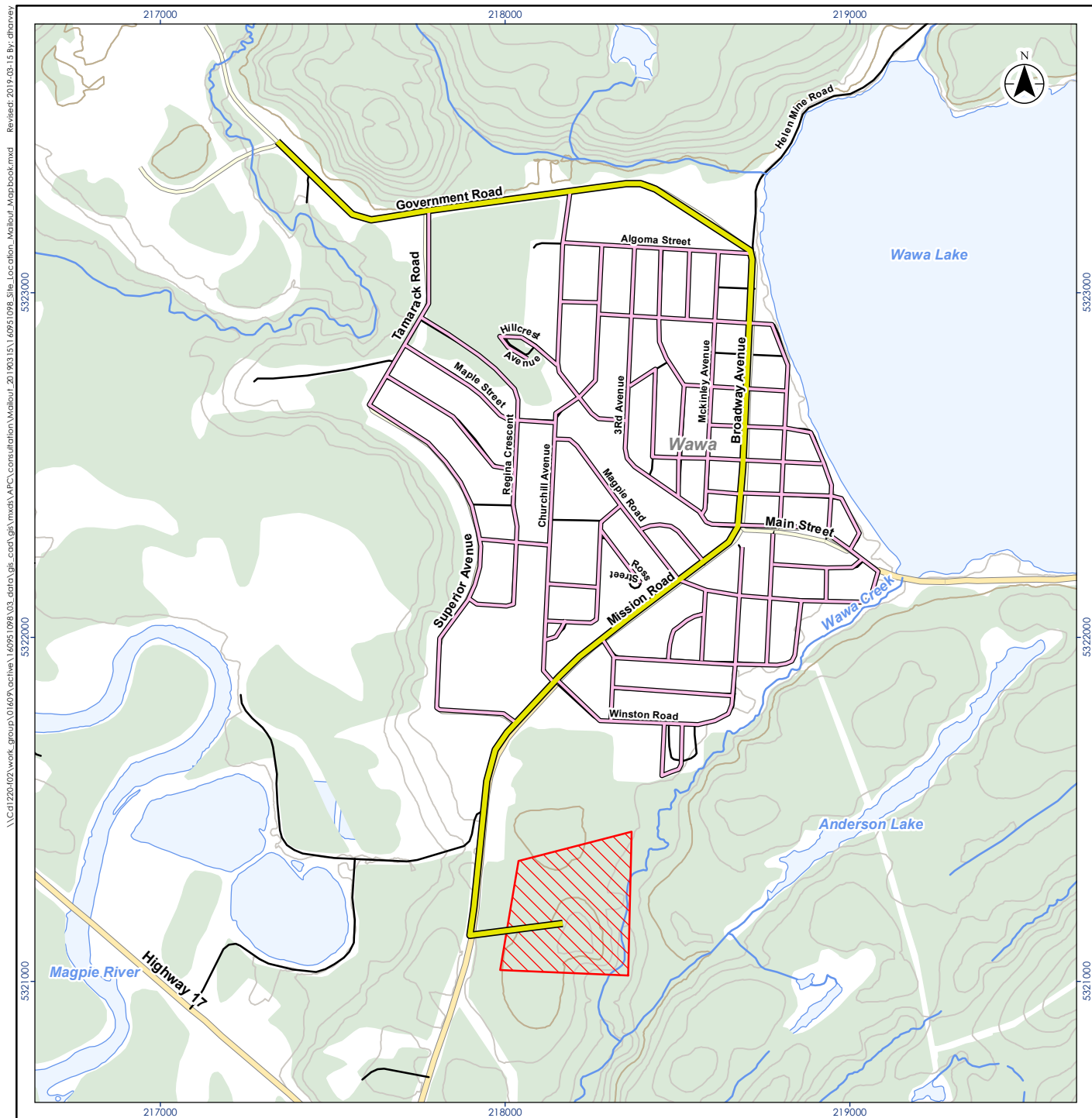
Client/Project: NORTHEAST MIDSTREAM NORTH SHORE LNG

Figure No.

4

Title: Project Location- Terrace Bay

Disclaimer: Stantec assumes no responsibility for data supplied in electronic format. The recipient accepts full responsibility for verifying the accuracy and completeness of the data. The recipient releases Stantec, its officers, employees, consultants and agents, from any and all claims arising in any way from the content or provision of the data.



**Notes**  
 1. Coordinate System: NAD 1983 UTM Zone 17N  
 2. Base features produced under license with the Ontario Ministry of Natural Resources and Forestry © Queen's Printer for Ontario, 2018.

#### Legend

- Lateral Pipeline
- Main Pipeline
- Proposed Storage Area Development Area
- Highway
- Major Road
- Local Road
- Watercourse
- Waterbody

0 250 500 metres  
 1:17,000 (at original document size of 8.5x11)



Project Location  
 Wawa, ON  
 160951098  
 Prepared by DH on 2019-03-15  
 Technical Review by RG on 2019-03-15

Client/Project  
 NORTHEAST MIDSTREAM  
 NORTH SHORE LNG

Figure No.  
**5**

**Project Location- Wawa**

Disclaimer: Stantec assumes no responsibility for data supplied in electronic format. The recipient accepts full responsibility for verifying the accuracy and completeness of the data. The recipient releases Stantec, its officers, employees, consultants and agents, from any and all claims arising in any way from the content or provision of the data.